

Phase 2
Kitchen Demo -
Physical Plant

December 1st, 2010



Physical Plant begins -





Drain pit depth for mechanical room -



Dec. 23rd – kitchen shut down



Inventory & store hardware -



Abatement begins – Dec. 27th





2 1/2' x 3 1/2' x 1/2" 1000' 1000' 1000'

WILLIAMS PLASTIC SHEETING

WILLIAMS SUPPLY

DANGER

ASBESTOS

CANCER AND LUNG
DISEASE HAZARD.

AUTHORIZED
PERSONNEL ONLY.
RESPIRATORS AND
PROTECTIVE CLOTHING
ARE REQUIRED
IN THIS AREA.

Kitchen tear down – Dec. 27th



Dishwasher gone -



Inventory to Bus Barn -





John Adams exhaust hood -



Floor abatement complete -



Temp wall install SR café -



Old SR. High serving line -



Old dishwasher location -



Foundation concrete Jan. 13th





Sump pit forms -



Snow removal for roof demo -



New equipment arriving – 2/2/11



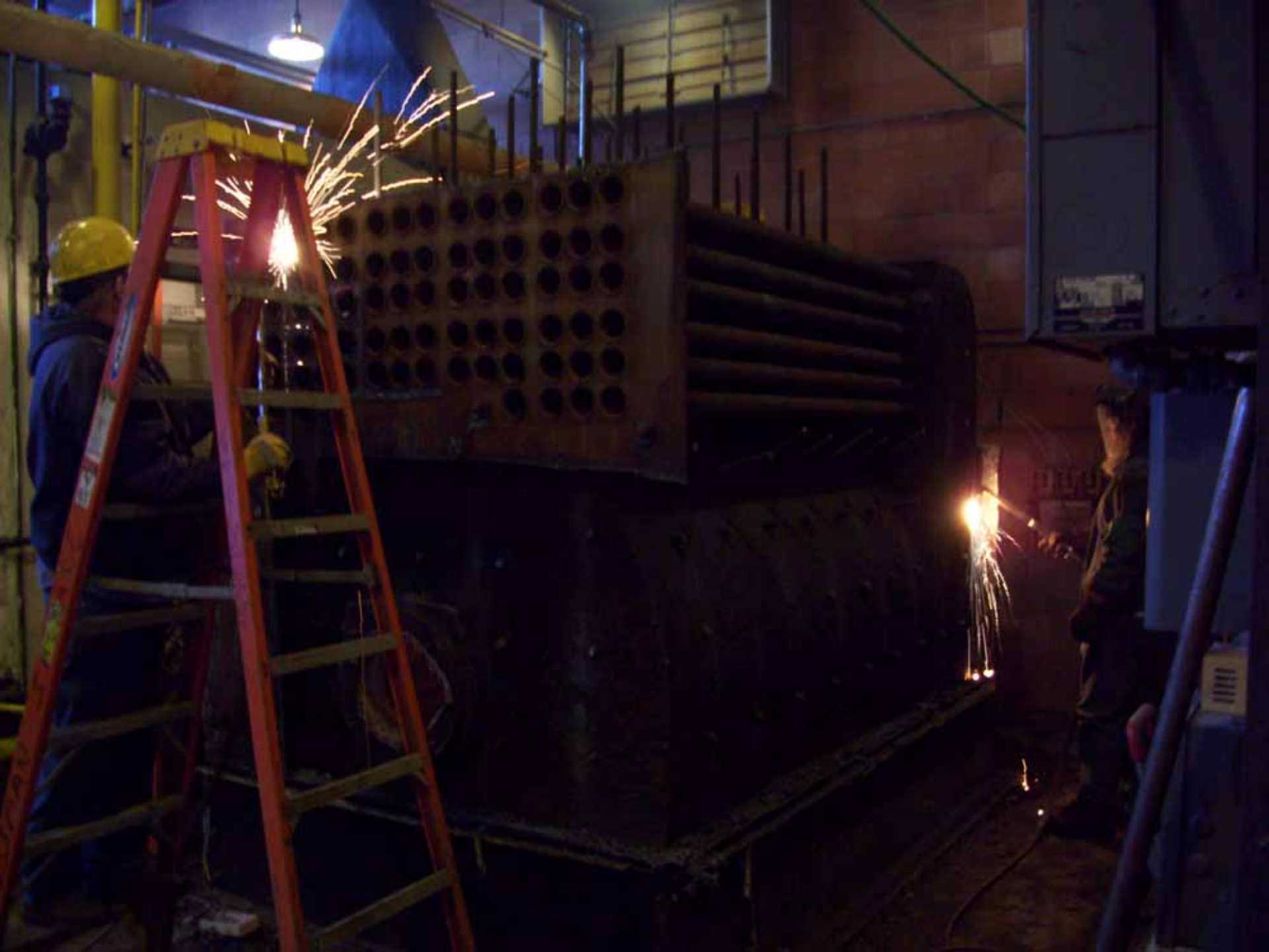
Feb 4th - Cast 'T' removals



Boiler demolition 2/7/11







Waste disposals -



Kitchen floor tile demo – 2/14





John Adams stage demo -



39 degrees – block work



Block walls cont. -



